

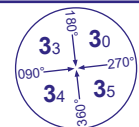
INSTRUMENT APPROACH CHART - ICAO

BELFAST ALDERGROVE

VOR/DME

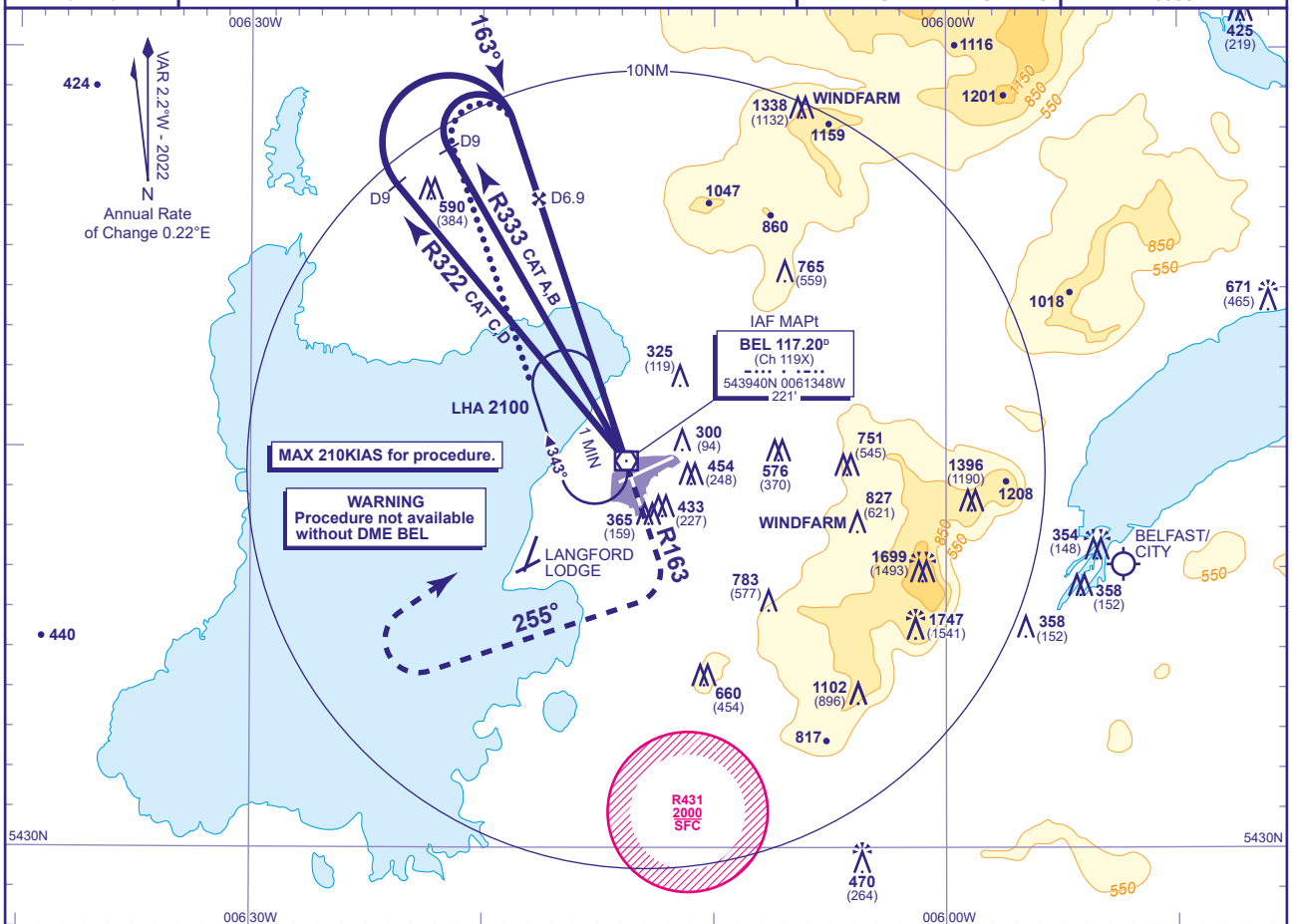
RWY 17

(ACFT CAT A,B,C,D)



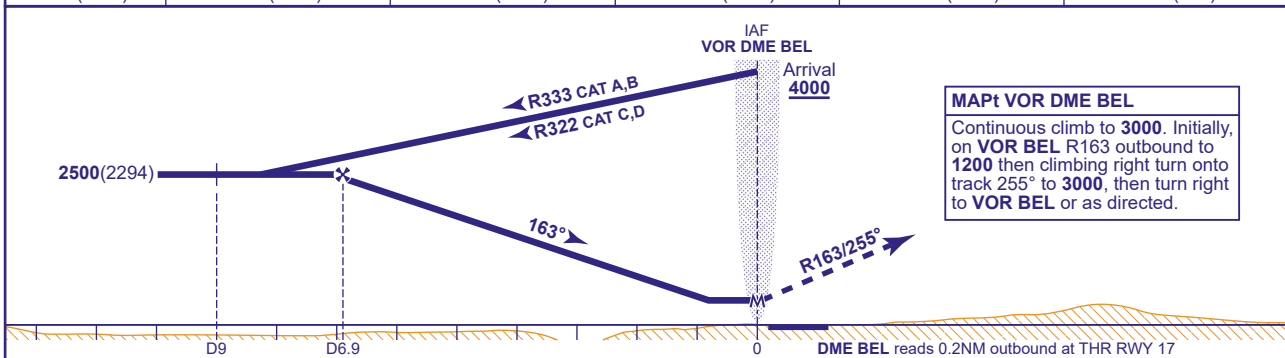
MSA 25NM VOR BEL

APP	133.125	ALDERGROVE APPROACH	AD ELEVATION	268
TWR	118.300	ALDERGROVE TOWER	THR ELEVATION	206
RAD	120.905	ALDERGROVE DIRECTOR	OBSTACLE ELEVATION	1747 AMSL (1541) (ABOVE THR)
ATIS	126.130	ALDERGROVE INFORMATION	BEARINGS ARE MAGNETIC	

TRANSITION ALTITUDE
6000

RECOMMENDED PROFILE Gradient 5.20%, 316FT/NM

DME BEL	6	5	4	3	2
ALT(HGT)	2220(2014)	1900(1694)	1580(1374)	1270(1064)	950(744)



Aircraft Category		A	B	C	D	Rate of descent	G/S KT	160	140	120	100	80
OCA (OCH)	Procedure	570(364)	570(364)	570(364)	570(364)		FT/MIN	850	750	640	530	430
VM(C)OCA (OCH AAL)	Total Area	750(482)	840(572)	1180(912)	1290(1022)							

ALTERNATIVE PROCEDURE EXTENDED HOLDING PATTERN

Overhead VOR BEL (IAF) extend outbound leg of holding pattern descending to **2500**(2294). At BEL DME 9 turn right to intercept extended FAT, then continue as for main procedure.

NOTE Aircraft will normally be required to hold not lower than **3000** at VOR BEL.

CHANGE (5/25): NW MSA INCREASE. NO DME PROCEDURE WITHDRAWN. OCA(OCH) REVISED. WARNING ADDED.